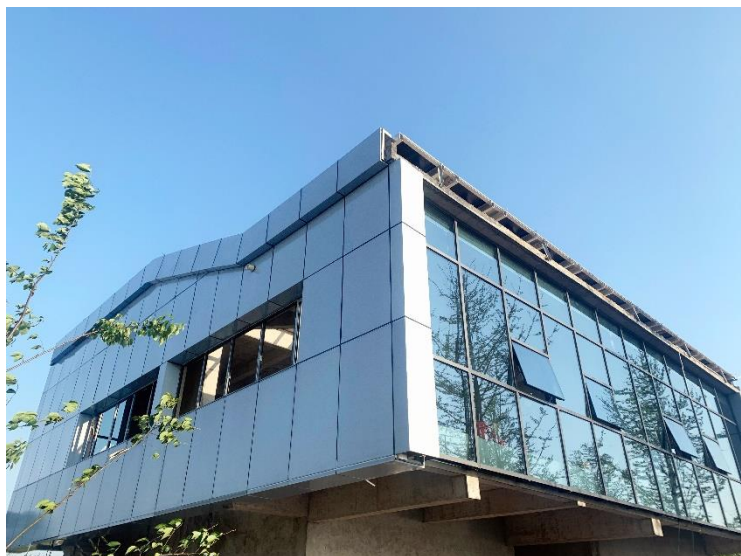


WHITE ACTIVE FAÇADE REALIZATION IN CHINA

Realization in Quzhou, China, February 2020

The desires of the building owner, related to the aesthetic aspects, were 100% fulfilled.



Simple integration into PV modules

To obtain the best possible performance and reliability, our films are simply added on top of standard PV modules during the lamination process.

Both glass/backsheet and glass/glass configurations are supported.

Technical data

- Glass/Glass PV module configuration
- More than 120 PV modules installed on southwest- and northeast- oriented facades and on the rooftop
- Installed capacity is around 20 kWp with each module being around 170 Wp
- Each string connected to an interface of microinverter
- PV module manufacturer: Quantacour.



Contact

Solaxess SA
2074 Marin / Switzerland
E-Mail: info@solaxess.ch
Tel. +41 32 727 28 28
www.solaxess.ch